



HSC70 Mouse mAb(7G12)

Catalog No	YP-Ab-04795
Isotype	IgG
Reactivity	Human; Mouse;Rat
Applications	IHC;WB
Gene Name	HSPA8 HSC70 HSP73 HSPA10
Protein Name	HSC70
Immunogen	Synthesized peptide derived from human HSC70
Specificity	This antibody detects endogenous levels of HSC70 at Human, Mouse,Rat
Formulation	Liquid in PBS containing 50% glycerol, 0.5% BSA and 0.34% sodium azide.
Source	Monoclonal, Mouse
Purification	The antibody was affinity-purified from mouse ascites by affinity-chromatography using specific immunogen.
Dilution	IHC-p1:50-200 ,WB 1:1000-2000
Concentration	1 mg/ml
Purity	≥90%
Storage Stability	-20°C/1 year
Synonyms	Heat shock cognate 71 kDa protein (Heat shock 70 kDa protein 8)
Observed Band	73kD
Cell Pathway	Cytoplasm. Melanosome. Nucleus, nucleolus. Cell membrane. Localized in cytoplasmic mRNP granules containing untranslated mRNAs. Translocates rapidly from the cytoplasm to the nuclei, and especially to the nucleoli, upon heat shock.
Tissue Specificity	Ubiquitous.
Function	function:Chaperone. Isoform 2 may function as an endogenous inhibitory regulator of HSC70 by competing the co-chaperones.,induction:Constitutively synthesized.,PTM:Phosphorylated upon DNA damage, probably by ATM or ATR.,similarity:Belongs to the heat shock protein 70 family.,subcellular location:Translocates rapidly from the cytoplasm to the nuclei, and especially to the nucleoli, upon heat shock. Identified by mass spectrometry in melanosome fractions from stage I to stage IV.,subunit:Interacts with HSPH1/HSP105. Interacts with IRAK1BP1 (By similarity). Interacts with PACRG and TSC2. Interacts with SV40 VP1.,tissue specificity:Ubiquitous.,
Background	This gene encodes a member of the heat shock protein 70 family, which contains both heat-inducible and constitutively expressed members. This protein belongs to the latter group, which are also referred to as heat-shock cognate proteins. It functions as a chaperone, and binds to nascent polypeptides to facilitate correct



folding. It also functions as an ATPase in the disassembly of clathrin-coated vesicles during transport of membrane components through the cell. Alternatively spliced transcript variants encoding different isoforms have been found for this gene. [provided by RefSeq, Aug 2011],

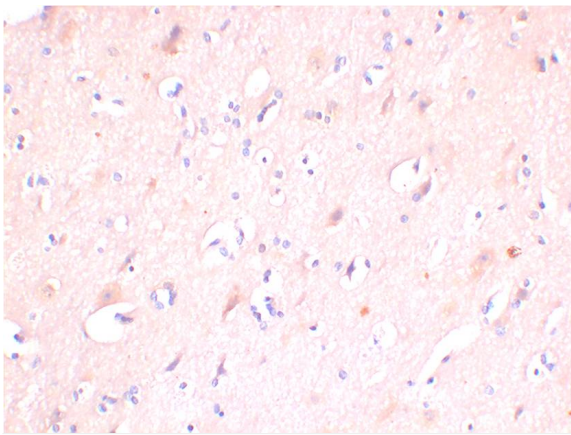
matters needing attention

Avoid repeated freezing and thawing!

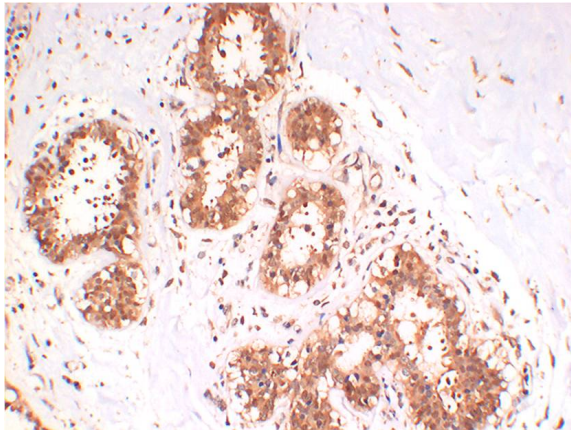
Usage suggestions

This product can be used in immunological reaction related experiments. For more information, please consult technical personnel.

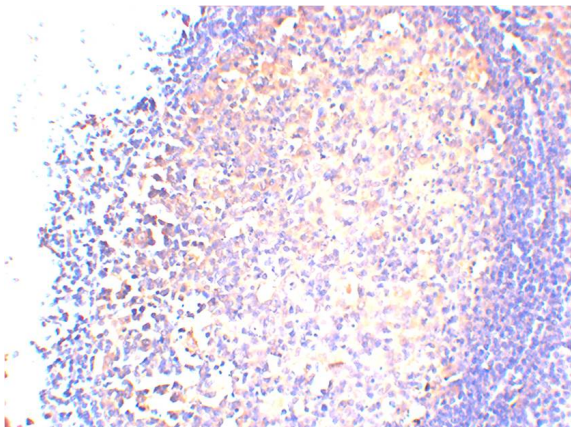
Products Images



Immunohistochemical analysis of paraffin-embedded Human Brain Tissue using HSC70 Mouse Monoclonal antibody diluted at 1:200.



Immunohistochemical analysis of paraffin-embedded Human Breast Tissue using HSC70 Mouse Monoclonal antibody diluted at 1:200.



Immunohistochemical analysis of paraffin-embedded Human Tonsil Tissue using HSC70 Mouse Monoclonal antibody diluted at 1:200.



1 2

Western blot analysis of 1)Hela Cell, 2) Mouse Brain Tissue Lysate using HSC70Mouse Monoclonal mAb diluted at 1:5,000.

